



User Guide to CA 2E / CA Plex Conference 2021

CA 2E / CA PLEX MIDRANGE

Deep Learning Conference

Hybrid In-Person and Virtual

Monday October 25-27, 2021



CA 2E CA Plex At The Concordia Campus: Wildlife Exploration

Concordia University Texas is located on a 389-acre tract in Northwest Austin, four miles east of Lake Travis. The university dedicated approximately 250 acres of its campus as a nature and wildlife preserve as part of a conservation easement with Travis County.

The campus is a living classroom for the study of responsible urban environmentalism and offers a unique opportunity to investigate and manage endangered species, native plants, hydrology, forestry, geology and archeology in a spectacular setting crafted by God's divine hand.

Directions Concordia university

From Downtown Austin:

- Take Interstate Highway 35 North.
- Take exit 240B for US-183 N/Research Blvd.
- Take the exit toward Anderson Mill Rd after about 8 miles.
- Keep left at the fork to continue toward Frontage Rd/Research Blvd/TX-183.
- Turn left at Anderson Mill Rd after about 1 mile.
- Turn left at 620/FM Rd 620 N/Ranch Rd 620 N after 2.4 miles.
- Turn left at Concordia University Drive after 2.6 miles.
- Once on Concordia University Drive, there will be a guard station where they will take information on incoming vehicles.
- The visitor parking lot will be on your left.

From South of Austin:

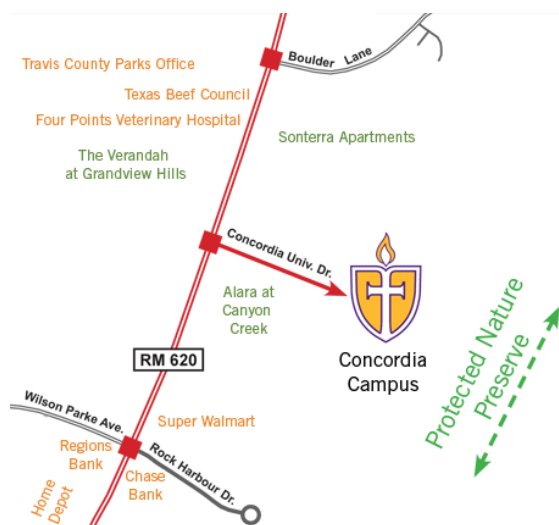
- Take Interstate Highway 35 North.
- Take exit 230 for US-290 W/TX-71 toward Johnson City/Bastrop.
- Turn left at E Ben White Blvd/TX-71 W (signs for US-290 W/TX-71 W). Continue to follow E Ben White Blvd for 1 mile.
- Take the ramp on the left onto TX-71 W/US-290 W for almost 2 miles.
- Slight right at S Capital of Texas Hwy/TX-360-LOOP N (signs for TX-360-LOOP/Capital of TX Hwy) after almost 2 miles.
- Take the RM-2222 exit toward Bull Creek Rd after almost 10 miles.
- Turn left at FM-2222 W/RM-2222 W/RR-2222 W.
- Turn right at RR-620 after a little over 5 miles.
- Turn right at Concordia University Drive after about 1.5 miles
- Once on Concordia University Drive, there will be a guard station where they will take information on incoming vehicles.
- The visitor parking lot will be on your left.

From North of Austin:

- Take Interstate Highway 35 South.
- Take exit 250B to merge onto TX-45-TOLL W toward TX-1-TOLL, the Austin toll road.
- Continue on RR-620 S after 8.4 miles.
- Turn left at Concordia University Drive after 4.3 miles.
- Once on Concordia University Drive, there will be a guard station where they will take information on incoming vehicles.
- The visitor parking lot will be on your left.

From the Austin Bergstrom International Airport:

- Take Hwy 71 West.
- Take the ramp on the left onto TX-71 W/US-290 W after 8.6 miles.
- Slight right at S Capital of Texas Hwy/TX-360-LOOP N (signs for TX-360-LOOP/Capital of TX Hwy) after almost 2 miles.
- Take the RM-2222 exit toward Bull Creek Rd after almost 10 miles.
- Turn left at FM-2222 W/RM-2222 W/RR-2222 W.
- Turn right at RR-620 after a little over 5 miles.
- Turn right at Concordia University Drive after about 1.5 miles
- Once on Concordia University Drive, there will be a guard station where they will take information on incoming vehicles.
- The visitor parking lot will be on your left.



Monday October 25 – Conference schedule

8:00AM – 9:00AM -Register-Incubator

Sign in at the incubator, sign in, pick up your name tag and get your goodie bag.

9:00AM – 10:00AM- Incubator

Green Flag / Broadcom Roadmaps

10:00AM – 10:30AM- Incubator

Sponsor Introductions

Plex/2E Modernization Roundtable

Noon – 1:30PM- Incubator

Pit Stop (Lunch) and Special Keynote Speaker Address

Technology 1

1:30PM – 2:30PM -F202

IBM i Cloud Rehosting / Managed Services

CA Plex

1:30PM – 2:30PM- Incubator

CA Plex Deep Dives

CA 2E (Synon)

1:30PM – 2:30PM-C119

CA 2E Tips and Techniques

SPANISH

1:30PM – 2:30PM- Luther Annex & Lawn

Technology

12:30PM – 3:30PM-F202

State of the Art DevOps for CA Plex/2E

CA 2E (Synon)

2:30PM – 3:30PM-c119

CA 2E (Synon) Show and Tell

CA Plex

2:30PM – 3:30PM- Incubator

Tips and Techniques for Plex and Webclient

SPANISH

2:30PM – 3:30PM Luther Annex & Lawn

Experiencia en Aplicaciones CA Plex en la nube

Technology 1

3:30PM – 4:30PM-F202

Practical RPA Use Cases

CA 2E (Synon)

3:30PM – 4:30PM-C119

CA 2E Model Rest API

CA Plex

3:30PM – 4:30PM- Incubator

Replaforming CA Plex Apps: C++/RPG to C#/

Technology 1

3:30PM – 4:30PM-F202

Practical RPA Use Cases

4:30PM – 5:30PM-**Conclude Day** 15:00PM – 7:00PM

Welcome Reception- Luther Annex & Lawn

Network and unwind with wine and cheese at a beautiful Concordia campus location.

Tuesday October 26 – Conference and Training

8:00AM – 9:00AM- **Registration**- Incubator

Registration/Hospitality Desk Open. BREAKFAST is served at the Concordia Dining Hall (not included in conference fee).

9:00AM to 10:00AM- Incubator

Green Flag – Broadcom Futures

Technology 1

10AM – 11AM-F202

State of the Art Impact Analysis for 2E/Plex

CA 2E (Synon)

10AM – 11AM

Devops for Synon 2E -C119

CA Plex

10AM – 11AM- Incubator

CA Plex Show and Tell

SPANISH

10AM – 11AM- Luther Annex & Lawn

Usando librerías generadas en CA Plex en Visual Studio

Technology 1

11AM – 12PM-F202

Sponsor Lightning Talks

]

CA 2E (Synon)

11AM – 12PM -C119

CA 2E Deep Dives

CA Plex

11AM – 12pm- Incubator

New Plex Patterns

SPANISH

11AM – 12PM- Luther Annex & Lawn

Best of Spanish Track in English

12:00PM – 1:30PM - Incubator

Pit Stop (Lunch) and special keynote address

Training Sessions

CA Plex

1:30PM – 4:30PM - Incubator

CA Plex Messaging

CA 2E (Synon)-C119

1:30PM – 4:30PM

Advanced CA 2E Static Impact Analysis

Technology 1

1:30PM – 4:30PM-F202

Fun with Graph Databases

6:00PM – 8:00PM

Special Event Austin Yacht Club on Lake Travis

Wednesday October 27 – Training

8:00AM – 9:00AM- Incubator

Registration

Registration/Hospitality Desk Open. BREAKFAST is served at the Concordia Dining Hall (not included in conference fee).

CA Plex

9:00AM – 12:00PM- Incubator

Secure Plex Applications with SSO and MFA

CA 2E (Synon)

9:00AM – 12:00PM-C119

Modern CA 2E Web Services (2E)

Technology 1

9:00AM – 12:00PM-F202

Digital Process Automation Workshop

12:00PM – 12:30 PM- Incubator

Conclude Conference

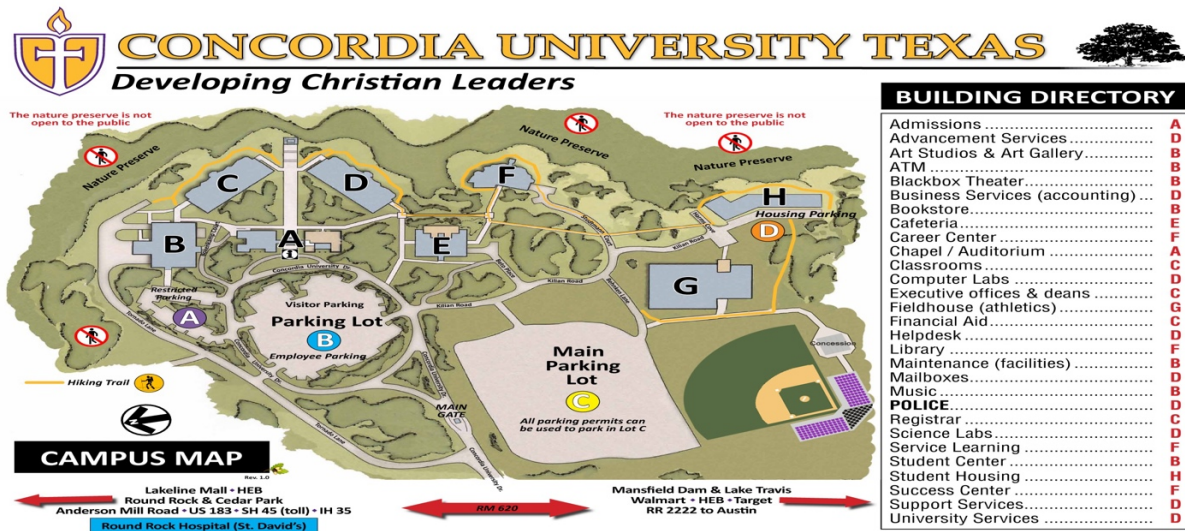
Checkered Flag: Conclude Conference

1:00PM

Post Conference

Relax and Unwind before your flight at a nearby Brewery overlooking Lake Travis.

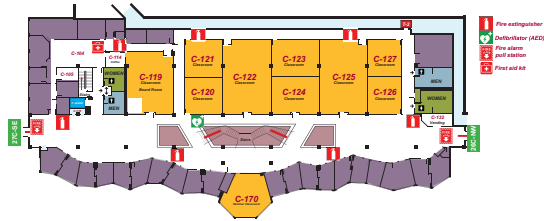
Concordia university map



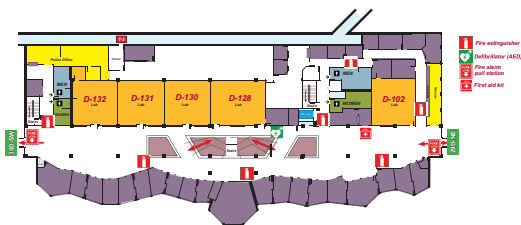
BUILDING B-Incubator, across from parking lot B



BUILDING C - FIRST FLOOR



BUILDING D - FIRST FLOOR



BUILDING F - SECOND FLOOR



F1 Logistics



Formula One pre-conference racing and concert events take place from Friday, October 22nd to Sunday October 24th. Below are the race and shuttle schedules for the event.

The RV will be Lot N

FRIDAY 22ND OCTOBER		
W Series	Practice Session	10:20 - 10:50
Formula 1	Practice 1	11:30 - 12:30
FIA Formula 4	Practice Session	12:55 - 13:25
Formula 1	Formula 1 Pirelli Hot Laps	13:45 - 14:15
W Series	First Qualifying Session	16:25 - 16:55
GERMANIA INSURANCE SUPERSTAGE	TWENTY ONE PILOTS	19:30 - 22:00

No Shuttle

SATURDAY 23RD OCTOBER		
FIA Formula 4	Qualifying Session	10:25 - 10:45
W Series	Second Qualifying Session	11:10 - 11:40
Formula 1	Practice 3	13:00 - 14:00
FIA Formula 4	First Race (10 Laps or 25 Mins +1 Lap)	14:25 - 14:55
Formula 1	Formula 1 Pirelli Hot Laps	15:05 - 15:25
Formula 1	Qualifying	16:00 - 17:00
W Series	First Race (30 Mins +1 Lap)	17:25 - 18:00
GERMANIA INSURANCE SUPERSTAGE	BILLY JOEL	19:30 - 22:00

**Shuttle from Holiday Inn 10:45am, Depart 11:00AM (Holiday Inn)
22:00. Shuttle from concert (or can book separate COTA shuttle)If
you need a shuttle from Barton creek mall-Contact Summer**



SUNDAY 24TH OCTOBER

FIA Formula 4	Second Race (10 Laps or 25 Mins +1 Lap)	10:00 - 10:30
W Series	Second Race (30 Mins +1 Lap)	11:05 - 11:40
Formula 1	Formula 1 Pirelli Hot Laps	11:50 - 12:10
Formula 1	Drivers' Parade	12:20 - 12:50
Formula 1	'We Race As One' Gesture	13:43 - 13:44
Formula 1	National Anthem	13:44 - 13:46
Formula 1	Grand Prix (56 Laps or 120 Mins)	14:00 - 16:00
GERMANIA INSURANCE AMPHITHEATER	KOOL & THE GANG	16:30 - 17:30

Shuttle from Holiday Inn 9:45am Shuttle from Holiday Inn (10:00AM) Return 17:00PM

**If you need a shuttle from Barton creek mall-Contact Summer
No shuttle for concert**



Things to do in Austin

Walk Or Bike Ladybird Lake Trail

Highly-rated spot for spectacular views, sunsets and nice walks. Lady bird lake is the epitome of the Austin lifestyle. The river like reservoir on the Colorado River is filled with people taking advantage of this stretch and backdrop of the downtown Austin skyline making it a great destination in all seasons. There are also several parks nearby, such as Zilker park and Auditorium shores to get an outdoor experience.

Mount Bonnell & Pennybacker Bridge

Mount Bonnell overlooking Austin provides one of the most greatest views in Austin. It is a bit of a hike, but the view won't disappoint. Picture-perfect moments and sunset spots! The Pennybacker Bridge, also known as the "Capital of Texas Highway," is widely considered one of the most scenic urban drives in Texas, in large part due to this arched weathering-steel bridge and the rolling hills that flank the road. You will not go wrong with the view.

Walk South Congress St.

Spend the day exploring South Congress. A dozen delicious places to eat, and interesting shops, street musicians and a feel for the city and the Capital is just a mile away.

Visit the state capitol

If it's in Texas, it must be bigger and better. That is the motto that architects followed with the Capitol Building in Austin and it sure is a beauty. Spend an hour or two walking around this gorgeous building and the beautiful lawn just outside.

Oasis on the Lake

As the largest outdoor restaurant in Texas, The Oasis has earned the reputation as the Sunset Capital of Texas, Known as the best sunset view in Texas. Make sure you're there at dusk, Only 10 minutes away from Concordia university. The Oasis Brewery is on the second floor if you want to chill and grab a beer and enjoy the view.

Crazy about BBQ, Pick, choose and refuse!

Franklin BBQ

One of the best BBQ joints in the world. Famous politicians to stop by. BBQ lovers start lining up around 7am for their world famous brisket.

Terry Black BBQ

Another great BBQ spot in Austin. If you know you want to chow down, this is the place to be. Their sides are amazing if you happen to be traveling with someone that is a vegetarian.

Salt Lick BBQ

The environment is truly southern and the BBQ really lives up to expectations. If you're craving something delicious but don't want the insane wait, then I would say Salt lick BBQ is your bet!

Remote attendees

-You will receive an email with your ticket from Eventbrite and a log in for the zoom meeting.

-Giveaways are on the way, if you haven't sent summer your postal address and t-shirt size, please do.

Summer.proch@cmfirstgroup.com

-All sessions will be recorded

Please print your parking pass and display

You can park in LOT B and C ONLY!

Concordia University Texas

Temporary Parking Permit

CA Plex/ 2E Conference

Valid for Parking Lot B and C

Display this parking permit on the dashboard while on campus. Please observe all regulations. Contact

Campus Security 24 hours: (512) 313-3311

Lock your vehicle!

Concordia University is not responsible for lost or stolen items, or damage while parked on campus.

Valid for 10/25/2021- 10/27/2021