



REDBOURN
BUSINESS SYSTEMS

Why We Stay With CA/2E (Session 5B)



2E/Plex

plex2e.com

Worldwide Developer Conference // 2011

POLITE NOTICE

This presentation is

Copyright © Steve Cast, of
Redbourn Business Systems Limited
2011 with all rights reserved. Please
do not distribute this presentation
without first confirming with
steve.cast@redbourn.co.uk

Thank You



PLEASE
SWITCH **OFF**
YOUR
MOBILE
PHONES
THANK YOU!



Please Give Your Feedback

For a copy of this presentation please visit www.redbourn.co.uk or leave your business card with me, or come and chat with me at the conference ... or in the bar.



Why?

Where?

When?

Question and Answer

Why?

Who?
Session

How?

What?

When?

Who?



Why We Stay with CA 2E



OR



Introduction



Steve Cast, Founder and Managing Director
of Redbourn Business Systems Limited

Redbourn Business Systems formed in 1994

ISV Developing and Supporting IBM i
(AS/400) Applications, for a wide range of
customers.



Introduction

3 Full Time Developers/Consultants,
Contract Resources Available for Projects

2 Support Team Members - Helpdesk

Typically 20+ years CA 2E Experience

CA, IBM and Microsoft Business Partner

Why We Stay with CA 2E

Background:
Why We Chose 2E

Pros and Cons
of Staying with 2E

Modernisation
Questions

A Plea to CA



Why We Stay with CA 2E

Background:
Why We Chose 2E

Pros and Cons
of Staying with 2E

Modernisation
Questions

A Plea to CA



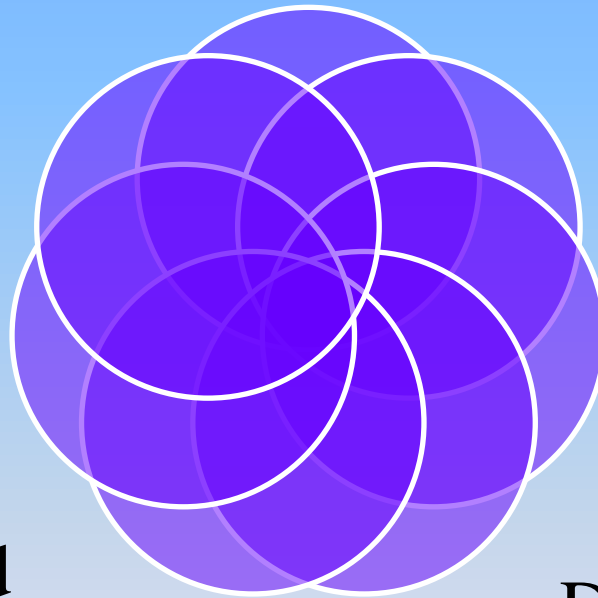
Background: Why We Chose CA 2E

**Many Reasons –
Here Are Some**

RPG Skill Set
Preserved

Action Diagram
Documentation

Training and
Support



AS/400
Environment

Development
Efficiency

Designer Role

Relevance Today?

Audience: Why Did You Choose CA 2E



Why We Stay with CA 2E

Background:
Why We Chose 2E

Pros and Cons
of Staying with 2E

Modernisation
Questions

A Plea to CA



Pros and Cons for Staying with CA 2E

Pros

- Rapid Development
- Easy Maintenance
- Reliable
- Future Proof
- Scalable
- Supported by CA

Cons

- Perceived as “old hat”
- Scarce Resources
- Ongoing Licence Costs
- GUI Issues
- Linked to IBM i



Audience:

Pros and Cons for Staying with CA 2E

Pros

Cons



Why We Stay with CA 2E

Background:
Why We Chose 2E

Pros and Cons
of Staying with 2E

Modernisation
Questions

A Plea to CA

Why We Stay With CA 2E

■ Modernisation Questions/Issues

- It isn't broke so don't fix it
- IBM only does “green screen”
- CA 2E only generates RPG or COBOL and won't talk to anything else
- AS/400s never go wrong

Adds up to low ongoing investment in CA 2E developed systems, often resulting in a mistaken, misguided view that replacement is the only viable option.



Why We Stay With CA 2E



Modernisation
Question:

Which Way Do
We Go?

Modernise
NOT
Replace

Why We Stay with CA 2E

Case Study 1

CA 2E System. <300 tables, <1,000 programs
RPG. Green Screen. Running OS V4. Built in 90's.

Small, but highly profitable, insurance company,
merged with larger company.

Larger company had no AS/400, all Windows
based applications. IT Manager and Application
Support Manager both very dismissive of IBM i.



Audience: Discuss Case Study 1



Why We Stay with CA 2E

Case Study 2

CA 2E System. <500 tables, <2,500 programs.

RPG. Green Screen and Web. Running OS V6.

150+ Man Days Support/Development per annum.

Specialist solution, highly bespoke. Multi language.

IT team generally supportive of IBM i. Attempted to move to LANSA 4 years ago, still in progress.



Audience: Discuss Case Study 2



Why We Stay with CA 2E: Survey

How Do You View the
Future of CA 2E?

Discuss

Why We Stay with CA 2E



“The reports of my death
are greatly exaggerated”

Mark Twain

Why We Stay with CA 2E: A Plea

Dear CA,
We, the undersigned,
would like you to raise the
profile of CA 2E
worldwide and provide a
clearer modernisation
path.
Furthermore, we ask

Why We Stay with CA 2E

Background:
Why We Chose 2E

Pros and Cons
of Staying with 2E

Modernisation
Questions

A Plea to CA



Why We Stay with CA 2E

Next Steps

Now

- CA 2E is “here to stay” tell your friends and spread the word.
- Continue to write great systems in 2E.

Next

- Join the global community.
- Work with CA to improve visibility.
- Suggest improvements to CA for 8.7+



Why We Stay with CA 2E:

CA 2E is a great
development
environment

CA 2E sites need
a clearer direction for
modernisation

Can CA help by
marketing CA 2E's
future direction more?



Steve Cast,
Founder and Managing Director,
Redbourn Business Systems Ltd



Why We Stay with CA 2E

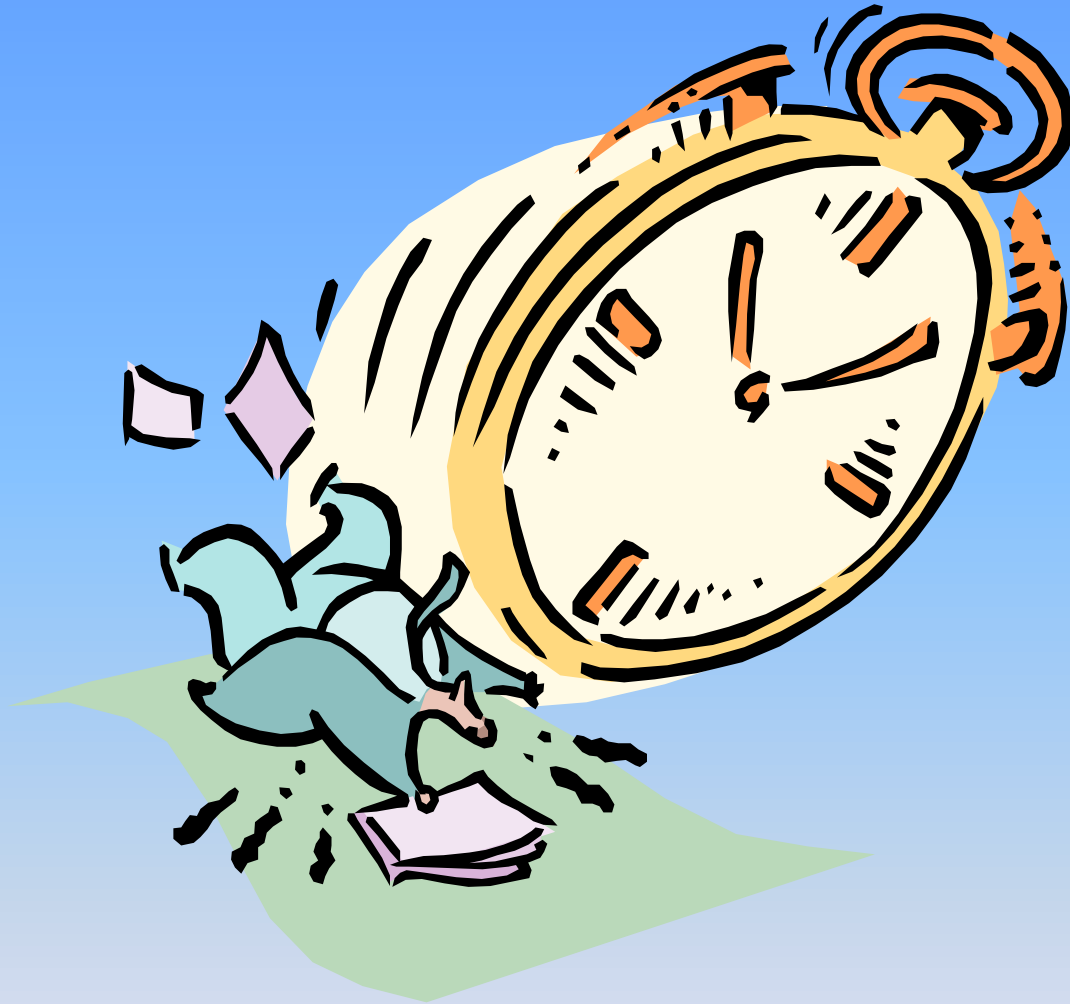
Question and Answer Session



Please Give Your Feedback

For a copy of this presentation please visit www.redbourn.co.uk or leave your business card with me, or come and chat with me at the conference ... or in the bar.





Thank You For Your Time



Why We Stay with CA 2E

Want To Discuss This More?



CA 2E Plex Conference

CA Online Community

steve.cast@redbourn.co.uk

www.redbourn.co.uk

