

What's New in Implementer and CA 2E Change Management

Marty Acks
June 2, 2011



MKS

Speaker Bio

- Marty Acks (macks@mks.com)
- Product Manager, MKS/PTC
- Notable CA 2E background:
 - Exposed to Synon/2 in 1986 by Simon Williams
 - Co-founded Silvon Software in 1987
 - Architect for CA 2E CM in conjunction with Synon starting in 1991



MKS Overview

- Formerly Publicly held - TSE:MKX
 - This week finalized acquisition by PTC
- Helping IT organizations managing development for over 25 years
- Application Lifecycle Management (ALM) specialists
- Fastest organically growing global ALM provider
- Solutions span NT, UNIX, LINUX, mainframe, and IBM i



CA and MKS

- Partners since 1991
- Names have changed, but the commitment remains the same
- CA 2E Change Management
 - Formerly CA AllFusion 2E CM, CA Advantage 2E CM, and COOL: Xtras CM,
 - Jointly developed AND jointly supported
 - Based on MKS's underlying Implementer product
- CA 2E Change Management R8.5 based on Implementer 2009



Agenda

- Implementer 2009 (CA 2E CM 8.5)
- Implementer 2009 SP1* (CA 2E CM 8.5 SP1)
- Implementer 2010 (CA 2E CM 8.5 SP2)
- Implementer 10.1 (CA 2E CM 8.5 SP3)

- *Coming soon:*
 - Implementer 10.2 (CA 2E CM 8.5 SP4)

Implementer 2009 Objectives

- This release delivers on a number of strategic product roadmap initiatives; specifically, it adds significant functional support for the following areas:
 - Enhanced integrations for CA 2E
 - Improved graphical capabilities in RDi (and WDSC)
 - New integration for CA Plex (via ADC Austin)
- Additional improvements in:
 - Security and Auditability
 - Developer Usability
 - Promotion and Deployment
 - Other 3rd party integrations
- Over 175 separate enhancements and fixes



CA 2E Specific Improvements

- CA 2E 8.5 support*
 - Still backwards compatible to 8.0
- Service Programs supported*
- Net change promotion of CA 2E messages and conditions*
- Eliminate locking of run-time condition file during promotion*
 - Allows promotions while users are in the application
- Support for SQL
 - Compile No requests now promote correctly
- Concurrent development across multiple environments supported
 - Previously within one environment
- More logical ordering of items on promotion requests*
 - Model Objects listed first then generated objects
- Improved function description on Workbench (Surrogate removed)



RDi/WDSC Plug-in Key Features

- RDi 7.5 supported
 - RDi 7.1 and WDSC 7.0 still supported
 - (Later in presentation discussion of RDP 8.0)
- Direct launch of Debugger using SEPs for ILE debugging
- RSE Screen Designer available
- Add to IBM i projects
- Contextual help added
- Visual differencing and annotated views on main drop down menus
- 32 bit JVM now used on server side
- Improved multilingual support
- IFS improvements
- Numerous usability changes



Security and Audit Focused

- QSECOFR adoption
 - Allow profile other than QSECOFR
 - Profile does not require *SECADM rights
- Create date of promoted objects configurable
 - Date of promotion or compiling (was always date of compiling)
 - Give appearance of MOV OBJ or CRTDUPOBJ behavior
- CHGSYSLIBL use reduced to one obscure case
 - Only QTEMP actually present on promotion job's system library list



Developer Usability

- Environment paths used when rejected from QA
- Archive Recovery available within Work with Objects
- Simplified user defined filters, first introduced in 2008 release



Promotion and Deployment

- Environment Group Selection available in Create Request
 - F4 now available
- Longer creation commands when overridden during promotion
- Improved special command support:
 - New keywords for #OBJTYP, #PROJECTS #ISSUE, #RQSUSR, #JOBUSR, #LCKUSR
- Faster SQL promotions
 - When multiple columns promoted only one Alter Table statement is created
- SQL stored procedures
 - Non-source based improvements



Other 3rd Party Integrations

- Lotus Domino
 - Support for non-default locations
 - Support for Domino 5 through 8



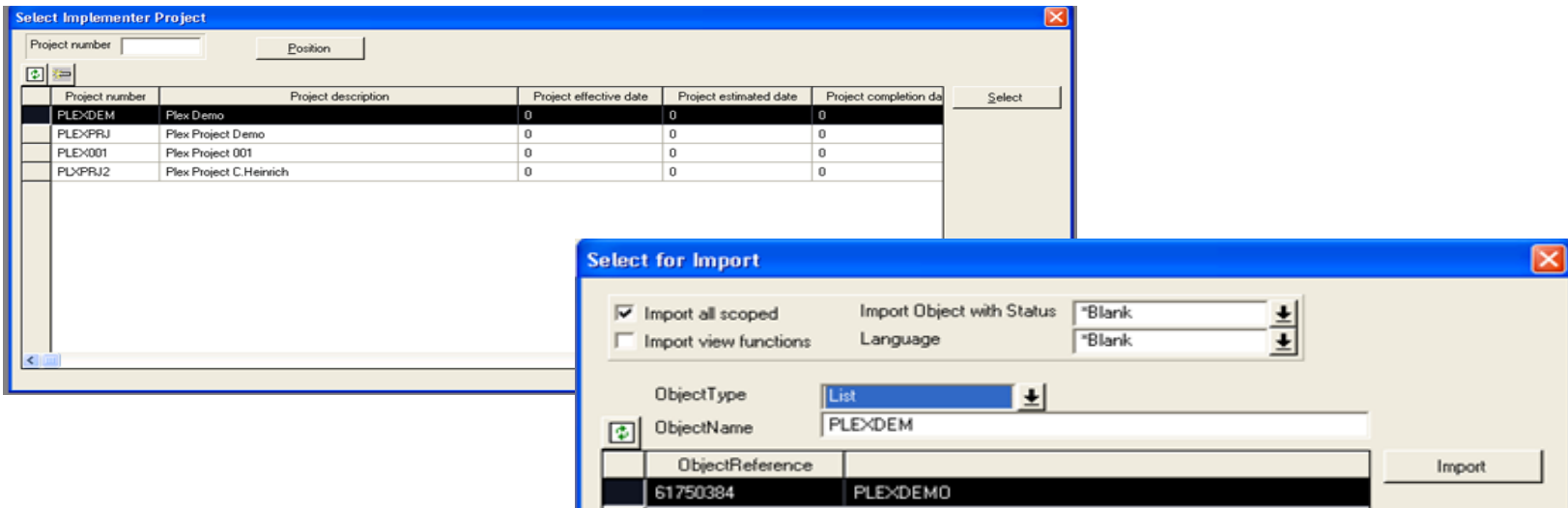
MKS Integrity and ALM Support

- Faster release of floating licenses of MKS Integrity
 - Allows for more reasonable license consumption
- New Test Management capabilities in MKS Integrity 2009
- New eclipse and .Net integrations for distributed development
- Modernized web interface



CA Plex

- MKS Connector for Plex now available
- ADC Austin and MKS
 - Leverages technology from ADC Austin and CM First
- Protects your investment in CA 2E CM should you move to Plex
- Works with CA 2E CM or Implementer



Implementer 2010

- Support for IBM i 7.1
- Enhanced SQL Support
- Japanese Localization
- CA 2E integration
- RD for Power



By the Numbers

- Implementer 2010 consists of 178 distinct product changes
 - In MKS terminology these are RFCs – Requests for Change
 - These include both enhancements and error corrections
- Implementer 2010 fulfilled 238 customer requests
 - In MKS terminology these are SRs – Service Requests
 - Some were delivered via Service Packs (SP1) and patches



IBM i 7.1 Support

- Certified on General availability date of April 23, 2010
 - For existing functionality
 - Implementer Server modified to use the latest JVM
- Implementer 2010 now supports major new features of IBM 7.1
 - RPG Open Access – additional option for modernizing your web applications
 - SQL Field procedures - for encrypting data
 - SQL XML data types
 - Solid state devices (SSDs) - for faster access to high use data
 - Both SQL and DDS support added
 - Teraspace option – Storage model parameter (STGMDL) for bound programs – for very large executables
 - New printer file options – PDF creation (new in 6.1)



SQL Improvements

- Promotions of existing SQL Tables now retains field order
 - Requires IBM i 7.1
- Long names supported for SQL Tables, Views, and Indices
 - Requires specific RENAME syntax
- SQL sequences now supported
 - Source-based only
- SQL source file longer than 80 characters
 - Actually introduced in IBM i 6.1
- Materialized Query Tables (MQTs) now supported
 - Some limitations, see release note for full details
- Added new SQL based on new IBM 7.1 changes:
 - Field Procedures, XML data type, and SSDs



RD for Power Plug-in Improvements

- RD for Power is the new name for RDi (Which was the new name for WDSC)
- Full name is Rational Developer for Power Systems Software
- RD for Power 7.5 (and 7.6) supported
 - Two releases came out back to back in early 2010
- What if you are not ready for RD for Power?
 - We continue to support RDi 7.5 and 7.1 and WDSC 7.0
- New options for accessing RSE features from Implementer subsystem
 - Fully supports new capabilities in Report Designer introduced in RD for Power 7.5



Improved creation command retention and visibility

- All parameter now retained, not just those stored on the object
 - Examples include BNDDIR on service and ILE programs, EXPORT parameter for service programs
 - OPTION, GENLVL, and GENOPT for many different commands
- Visible in both Workbench and Work with Objects

The screenshot displays two overlapping windows from the IL400SV2 Workbench. The left window, titled 'WRK BCH. 1', shows a table of objects and their creation commands. The right window, titled 'Previous Creation Command', shows the detailed creation command for a selected object.

WRK BCH. 1 - Table:

Opt	Mbr/obj	Code	From env	To lib/env	Comments
___	JS020T	SQLTBL	MSA50BAS	MSA50DEV	
___	JT020P	PF	MSA50BAS	MSA50QA	
___	JT020PFMT	PF	MSA50BAS	MSA50DEV	
___	JT030P	PF	MSA50BAS	MSA50QA	
___	JT034L	LF	MSA50BAS	MSA50DEV	
29	JT040P	PF	MSA50BAS	MSA50DEV	
___	JT042L	LF	MSA50BAS	MSA50QA	
___	JT060P	PFDTA	MSA50BAS	MSA50QA	

Previous Creation Command - Details:

Environment : MSA50DEV
Member/object : JT040P
Object code : PF

Creation Command:
CRTPF FILE (MSA50DEVF/JT040P) SRCFILE (MSA50DEVS/QDDSSRC) AUT (*CHANGE)
SRCMBR (JT040P) FILETYPE (*DATA) MAXMBRS (1) MAINT (*IMMED) RECOVER (*NO)
FRACCPH (*NO) REUSEDLT (*NO) SIZE (10000 1000 3) ALLOCATE (*NO) CONTIG (*NO)
UNIT (*ANY) FRCRATIO (*NONE) WAITFILE (*IMMED) WAITRCD (60) DLTPCT (*NONE)
LVLCHK (*YES)

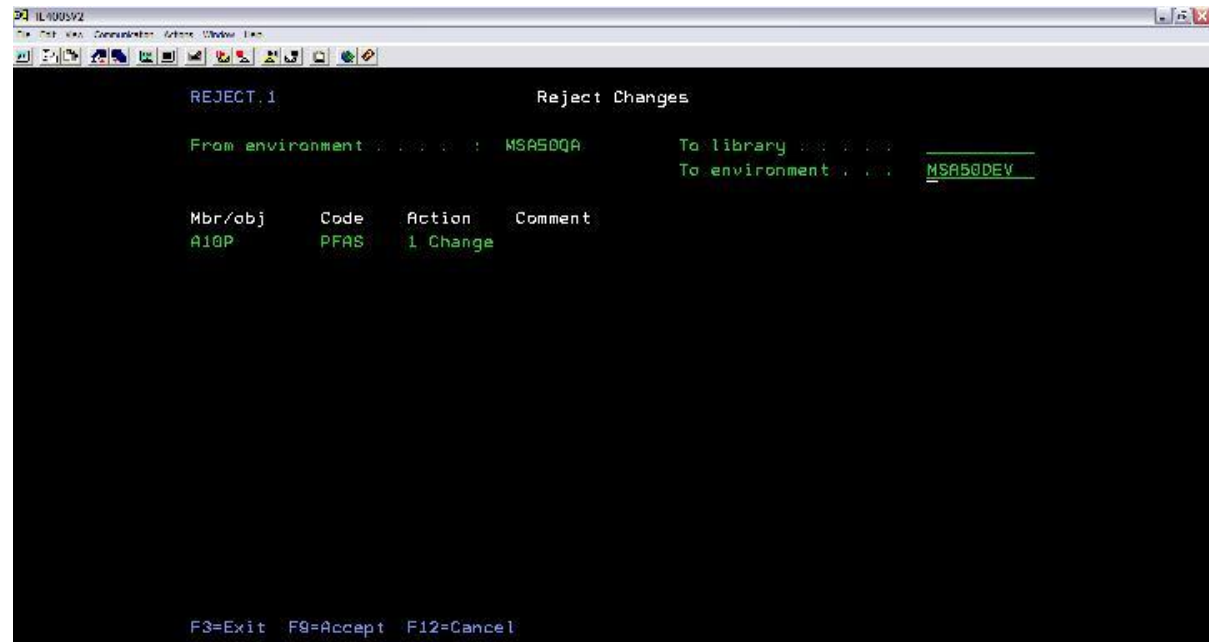
Improved Compile Library List Accuracy

- Workbench compiles improved when checking out to a library
 - Check out to environment remains the same
 - Workbench only, no promotion impact
- Now uses a development library plus libraries from next environment on the path
- Requires less manual manipulation of library lists by developer
- Eliminates level checks



Simplified Reject

- Reject now appears as a confirmation style panel, instead of a Check Out like panel
- Numerous unused fields removed



Check Out Overrides Simplified

- Option 2 used for changes instead F7 for “subfile fold”
 - Eliminates older style user interface
 - Makes this more extensible in the future
- If you press F7, you get a message to use option 2 instead.
- F13 for repeat support for all options just like the Implementer Workbench

```
IL400SV2
File Edit View Communication Actions Window Help
CHKOUT.1 Check Out
From
Proj
Desi
Type
2=
10
Opt
2
Copy from information:
Copy from environment . . .
Copy from member/object . . .
Copy from source file . . .
Copy from library . . .
Check out to user . . . *USRPRF
Allow type/attr change . . . N
Revision number . . .
F3=Exit F12=Cancel
F3=E
F10=Select entity F12=Cancel F13=Repeat F17=Abstract F18=Pathfinder
12/039
3902 - Session successfully started
start Microsoft Office... Microsoft Off... Microsoft PowerP... Items View [Impl... IL400SV2 6:58 AM
```

Project Improvements

- Work with Projects allows hiding completed projects and displays key dates on main panel
- Activity Report filters now include effective date and completion date

```
IL400SV2
File Edit View Communication Actions Window Help

WRKPRJ.1                                Work with Projects

Type options, press Enter.
  2=Change  3=Copy  4=Delete  5=Display  8=Functions  9=Schedule 10=Workbench
 12=Promotion Reqs 14=Design Reqs 17=Standard path 18=Emergency path...

Opt Project Description Eff. Date Est. Comp Act. Comp
---#-----
---#DAVE Dave 7/14/98 09/09/97 01/01/03 10/10/09
---A A 11/01/99
---AA4NON aa4non changed
---AB TEST
---AH00001 Test Project for Checkout
---AH14 AH14 pathx 03/17/01 04/21/01 06/29/01
---AH14-2 No pathing
---AR_PROJ All tasks and activities (AR)
---A0 Marty test 12/01/07 12/03/07 12/05/09
---A1
---BMS Brad's project
---CDPROJ Concurrent Development Project
---CI77868 PABSC REPORT

More...

F3=Exit F6=Create F12=Cancel F18=Hide/Show Completed F24=More keys

MA a 16/002
1902 - Session successfully started
start Microsoft Of... 2 Microsof... Microsoft Po... Items View [... IL400SV2 Untitled - Paint 6:48 AM
```

CA 2E Reject Improvements

- Reject now works similar to traditional reject
- Reverse promotions now eliminated.
- Reject must all include CA 2E model objects on the model object list.
 - Note: Workbench can easily move from CA 2E model object list

```
IL400SV2
File Edit View Communication Actions Window Help

REJECT.1                                Reject Changes

From environment . . . . : IMQACMDL63    To library . . . . . : IMDEVMDL63
To environment . . . . : IMDEVMDL63

Mbr/obj   Code   Action   Comment
Y1105929  YFUN  2 Create

F3=Exit  F9=Accept  F12=Cancel
Press F9=Accept to check out.

MA a                                     03/070
i902 - Session successfully started
start  Microsoft Office ...  Microsoft Offi...  Microsoft PowerP...  Product Platform...  IL400SV2  7:14 AM
```

CA 2E Lock Deletion

- Delete now optionally allows deletes the CA 2E model object during lock deletion.
- This will eliminate stray development versions that can clutter development environments
- These versions cause excessive prompting to select a version at check out
- Applies to CA 2E functions (and messages)

```
IL400SV2
File Edit View Communication Actions Window Help
WRKBCH.9          Confirm Delete of Locks

Press Enter to confirm your choices for 4=Delete.
Press F12 to return to change your choices.

Delete locks Y   Delete model/object version Y

Mbr/obj   Code   From env   To lib/env User   Type   Status
Y1102325  YACP   IMPRDML63 IMDEVMDL63 DEVMSA  Std    Chkout-Crt
Y1104018  YFUN   IMPRDML63 IMDEVMDL63 DEVMSA  Std    Chkout-Crt
Y1105139  YFUN   IMPRDML63 IMDEVMDL63 DEVMSA  Std    Chkout-Crt
Y1105141  YFUN   IMPRDML63 IMDEVMDL63 DEVMSA  Std    Chkout-Crt

F12=Cancel

Bottom

06/002
```

Localized Support for Japan

- RD for Power, RDi and WDSC user interface now translated
- CCSID 1399 is now certified
- Host-based Send Email (ISNDMAIL) command now localized
- Single product install
 - New Installs analyze system to determine correct language
 - Upgrades retain existing language
 - Single set of executables with externalized translations
- Translation improvements based on initial customer and partner feedback
- Represents major new release for Japanese customers as Implementer 2009 was not released with Japanese language support
- One code base allows for more timely localization efforts



Implementer 10.1

- Implementer Upgrade
 - Eclipse-based desktop app for applying Implementer patches and service packs
 - Manage all Host/Receiver Install from one desktop
 - Offers a “self service” model for customers
 - Consistent version numbering across multiple releases
 - Rollback/Reinstall
- RD for Power 8.0 supported
- Release Management
 - Create PTF Release optionally includes superceded patches

Implementer Update

The screenshot shows the 'Implementer Update' application window. The left pane, titled 'Installed Products', displays a tree view for 'ibmi.example.com' containing 'MKSIM101 - 10.1 Host' and several update-related items: '113928 - Implementer target Environ...', '134453 - Promotion error VIM1439 i...', '141306 - Compare Report is corrup...', and '151310 - Delete from Workbench w...'. The right pane, titled 'Available Updates for MKSIM101 on ibmi.example.com', contains a table of updates. The update with ID 179826 is highlighted, showing a 'Version upgrade IM 2008J to IM 2...' with prerequisites and a date of 12/2/10.

ID	Summary	Prerequisites	Date
135654	Compare Report is corrupted in Imple...	No	5/11/09
151389	User who performed reject will be accur...	No	12/14/09
151832	User who submitted move request will b...	No	12/14/09
179826	Version upgrade IM 2008J to IM 2...	No	12/2/10
141411	When an object is stamped with alpha ...	Yes	7/22/09
143492	The install of a Release Management d...	Yes	7/24/09
142803	Provide ability to stop Visual LANSA che...	Yes	7/24/09
144398	Release Management PTFs can now be ...	Yes	8/5/09
143857	Rejecting Lansa functions will not displa...	Yes	8/5/09
144433	Request will not fail on distribution with ...	Yes	8/5/09
142435	When processing a Release Manageme...	Yes	8/5/09
144596	When promoting a DDS-based physical ...	Yes	8/6/09
138495	The Verification report is no longer com...	Yes	8/20/09
141192	CA 2E revision numbering for model obj...	Yes	8/26/09
148892	Normal Implementer CCSID detection &...	Yes	10/9/09
141376	A new feature has been added to the ...	Yes	11/17/09
151148	When creating PTF packages that inclu...	Yes	11/17/09
151144	When adding objects to the Clipboard f...	Yes	11/18/09
151140	When creating a Release Management ...	Yes	11/19/09
151435	This patch will perform edit checks agai...	Yes	11/19/09

ibmi.example.com - 1 libraries

Implementer 10.2

- Improved SQL support
 - True multi-level impact analysis
 - View on View Support
 - Improved MQT support
 - Hawkeye Update only support, Implementer only for impact analysis
- Work with Objects
 - Improved Related Objects display
- Zend php integration
 - Export to Implementer
 - Existing MKS Integrity support for eclipse client works well!
- Implementer Upgrade support for Proxy Servers
- Improved Implementer Server diagnostics



Availability

- Implementer 10.1 is now available
- Implementer 10.2 is planned for end of July
- CA Plex adapter is available from ADC Austin



Upgrading

- Customers who have licensed from CA or CA partner, should contact their local CA or partner representative.
- Customers who licensed through MKS can download the upgrade to Implementer 2009 from the MKS Customer Community (www.mks.com/community) or request the upgrade at support@mks.com.
- Customers interested in expanding their ALM capabilities with MKS Integrity for IBM i, can contact should contact MKS or email sales@mks.com.

Thank You

Any Questions?

Contact Marty Acks at macks@mks.com

